

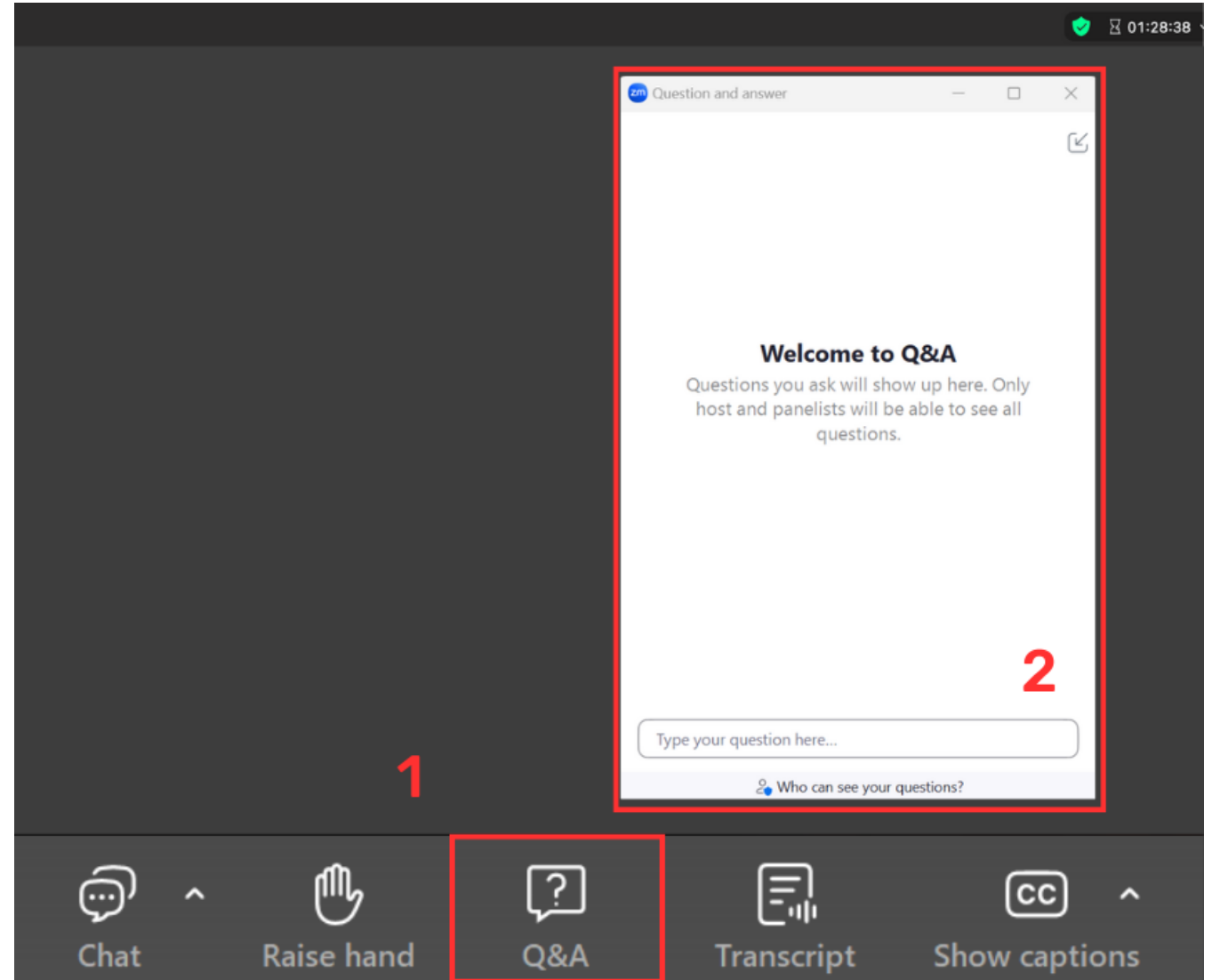


CALIFORNIA
STATE PARKS
FOUNDATION

PARKSIDE CHATS:
HONORING INDIGENOUS HERITAGE
IN CALIFORNIA STATE PARKS

HOW TO USE THE ZOOM Q&A FUNCTION

1. Click Q&A button
2. Type questions in the Q&A window.



PARKSIDE CHATS

HONORING INDIGENOUS HERITAGE IN CALIFORNIA STATE PARKS

12:00PM – 12:10PM

Welcome & About Parkside Chats

- Shakaylah Leonard, Member Stewardship Manager

12:10PM – 12:35PM

Speaker

- Taylor Moore – Museum Curator I

12:35PM – 12:55PM

Q+A with Audience

12:55PM – 1:00PM

Closing Remarks



TODAY'S HOST



Shakaylah Leonard

Member Stewardship Manager,
California State Parks Foundation

ABOUT CALIFORNIA STATE PARKS FOUNDATION

More Than 55 Years of Protecting California's State Parks

- Founded in 1969 by William Penn Mott, Jr., to be a partner to the California State Parks in protecting and preserving the California state park system.
- Over 70,000 members and more than \$300 million raised to support California's 280 state parks.
- Together we have preserved habitats, defended against threats, and welcomed more people into the outdoors.

Today, we remain steadfast in our mission to protect and preserve the California state park system, for the benefit of all.



**CALIFORNIA
STATE PARKS
FOUNDATION**

ABOUT PARKSIDE CHATS

A new virtual event series from
California State Parks Foundation

- Brings together park lovers, experts, and community voices
- Offers insights on conservation, history, climate resilience, and park access
- A way to stay connected to California's parks from wherever you are
- Format: Webinar or virtual tour



TODAY'S SPEAKER



Taylor Moore

Museum Curator I,
State Indian Museum State Historic Park & Sutter's
Fort State Historic Park

STATE INDIAN MUSEUM & SUTTER'S FORT

Honoring Indigenous
Heritage



NAGPRA & REPATRIATION

Repatriation is the process of returning items including, but not limited to, ancestral remains and sacred or cultural objects, to lineal descendants and tribes.

Currently, the State Indian Museum is repatriating feather baskets, regalia, and ceremonial instruments to California tribes.



A person's hands are shown holding a round, woven basket with a dark, geometric pattern. The person is wearing a grey sweater. The background is a bright, cloudy sky. The text is overlaid on the image.

WELCOMED HOME: A CELEBRATION

NAGPRA EXHIBIT AT THE CALIFORNIA STATE INDIAN MUSEUM

NAGPRA EXHIBIT

WE CELEBRATE ITEMS BEING WELCOMED HOME!



This photograph shows an example of grave robbing in the Southwest, featured in the January 21, 1922 issue of Life Magazine. The photograph above illustrated an article entitled, "Treasure and Archaeology: Lootings through an ancient Indian mound." Such images were common in popular publications.

Unwavering Native American activism was key to changing museum practices. Groups like American Indians Against Desecration worked throughout the 1980s and 1990s to bring attention to the issue of ancestors in museum collections. Thanks to the many Native groups and individuals who raised their voices, the Native American Graves Protection and Repatriation Act (NAGPRA) was signed into law on November 16, 1990. NAGPRA requires museums that receive federal funding to repatriate, or return, any Native American and Native Hawaiian ancestors, funeral and sacred objects, and important cultural items back to their related tribe or family member.

Museums in the United States have a long history of collecting and displaying Native American cultural items and ancestors (human remains). The State Indian Museum's collection includes many items from hobbyists and collectors who looted Native land. For decades, it was very difficult for Indigenous communities to reclaim their cultural items and ancestors from museums.



FOLLOW THE JOURNEY TOWARDS HEALING



The State Indian Museum still contains many cultural items that are precious to Native American communities. We are honored to be part of ongoing consultations with Tribal representatives and community members to return these items to their rightful owners.



Scan the QR code to learn more about NAGPRA in California State Parks.

Look around the museum for silhouettes like the ones below to learn more about items that have recently been welcomed home.



BIG VALLEY REPATRIATION



SUTTER'S FORT



STEPS TOWARDS CHANGE

Interpretation Master Plan

Amendment to the General Plan



11 NEW INTERPRETATION GOALS

"The mission of the Fort is to create a laboratory of learning to empower all visitors to discover an inclusive, complex, and accurate history of Sutter's Fort and California."



THANK YOU



Taylor.Moore@parks.ca.gov

Q&A

- Now it's your turn! We'd love to hear from you.
- Please use the Q&A function at the bottom of your screen to send in your questions.



THANK YOU FOR JOINING US

Let's keep the conversation going!

Share your thoughts on today's discussion with us on social media:

- **Instagram:** @calparks
- **Bluesky:** California State Parks Foundation
- **Facebook:** California State Parks Foundation (or facebook)

If you're not already a member, support state parks and join us at calparks.org/join!

